

Pardee Homes - The Way YOU Want to Live

San Diego Communities: Carmel Country Highlands | Greenbrier | Sabre Springs | Ocean View Hill

[About Pardee](#)

[Home Loans](#)

[Pardee Homeowners](#)

[Design Center](#)

[Commercial Properties](#)

[Contact Us](#)

[Home](#)



GREENBRIER

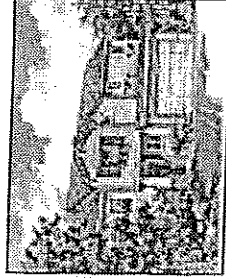
SCHOOLS : RECREATION : ENTERTAINMENT : MAP
FEATURES : PRICING & AVAILABILITY : VIRTUAL TOUR

The gated neighborhood of Greenbrier offers privacy, comfort and upscale living in a scenic hilltop setting close to all of the amenities of coastal North County. Three elegantly detailed plans offer from approximately 1,788 to up to 2,222 square feet with up to 4 bedrooms, 3 baths and 2-car garages.

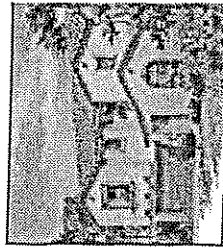
All plans feature great rooms or family rooms with fireplaces, gourmet kitchens, handy second-floor laundry rooms, elegant master suites and high-speed, Category 5 wiring.



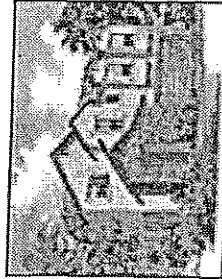
FLOOR PLANS & EXTERIORS



PLAN 1



PLAN 2

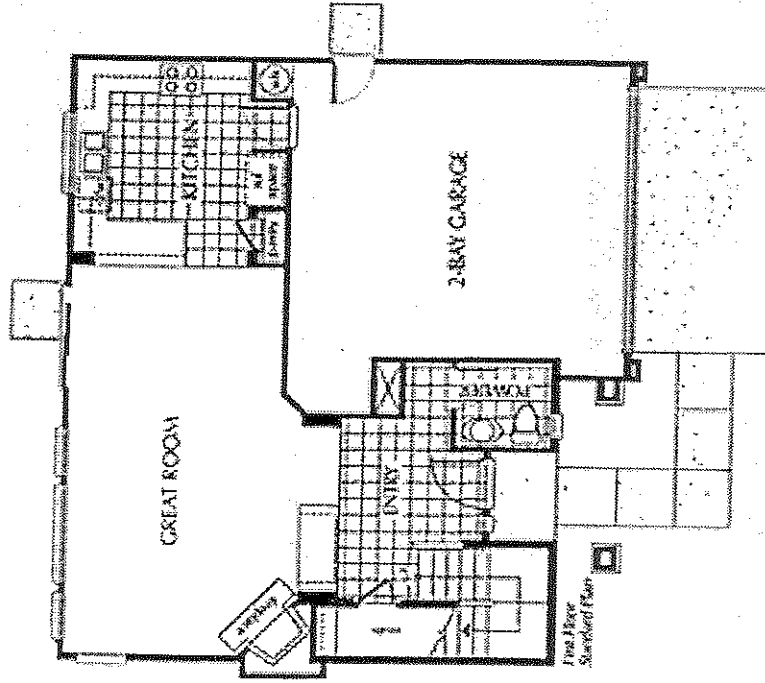


PLAN 3

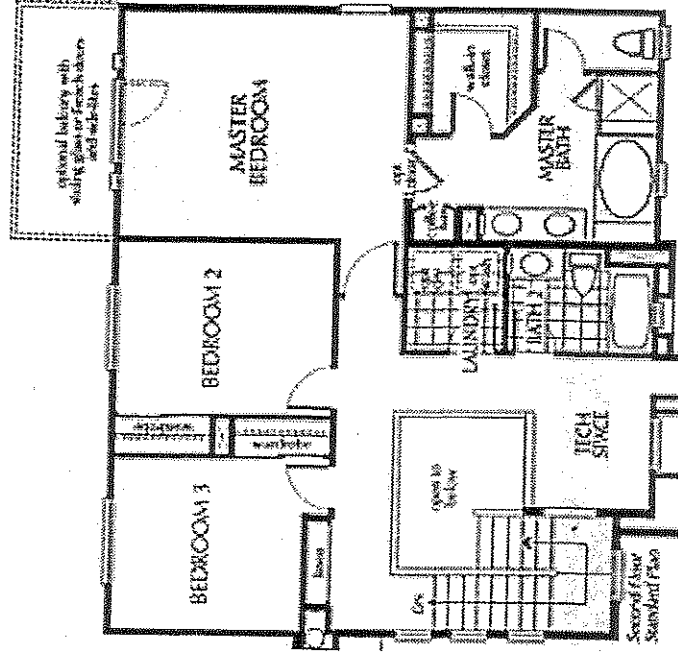


PLAN 1

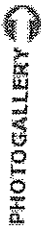
FIRST FLOOR



SECOND FLOOR



Zoom In

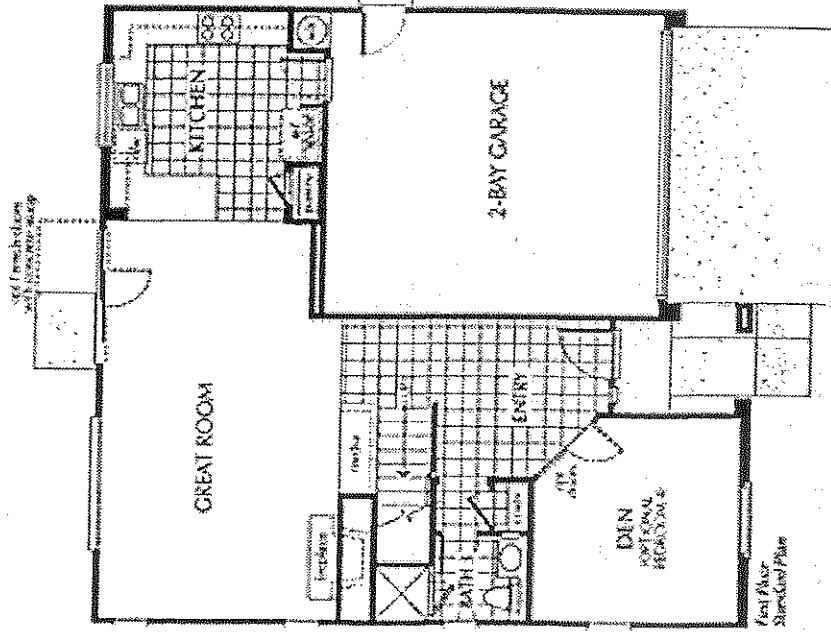


Close Window

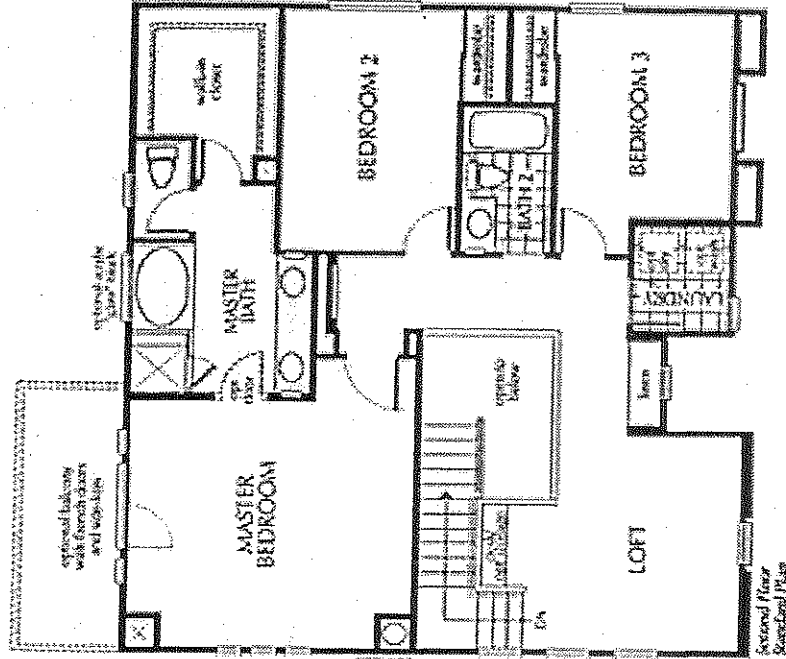


PLAN 2

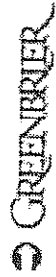
FIRST FLOOR



SECOND FLOOR

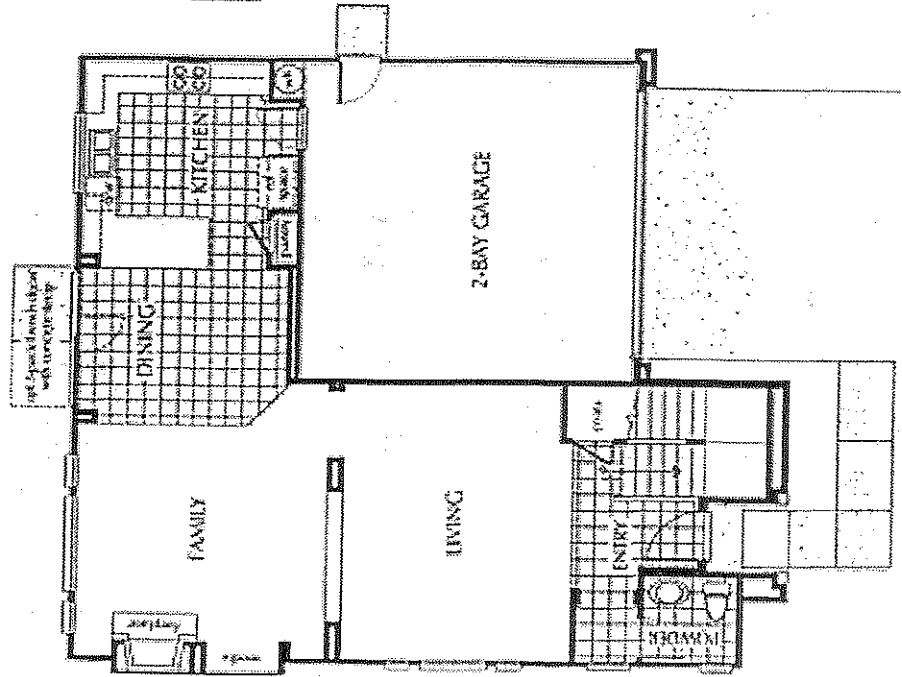


Zoom In

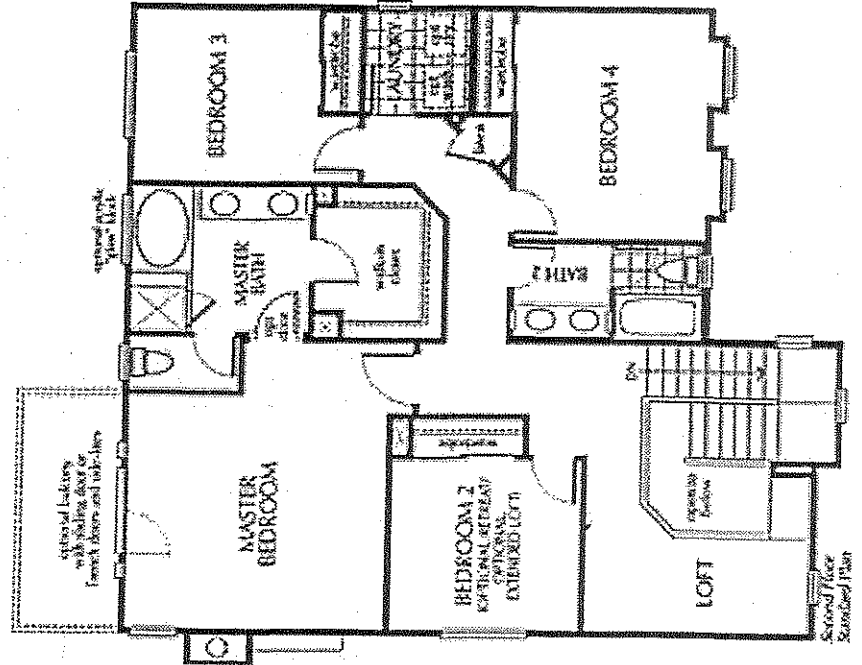


PLAN 3

FIRST FLOOR

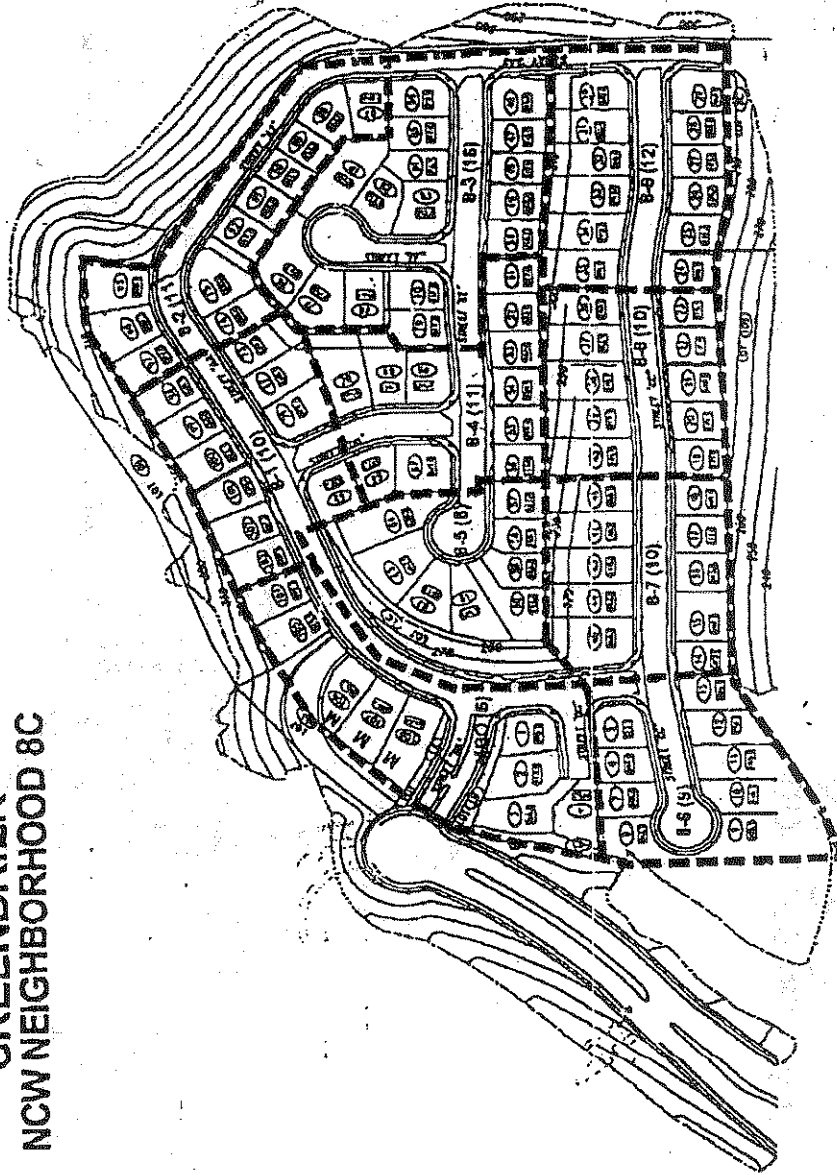


SECOND FLOOR



Zoom In

**GREENBRIER
NCW NEIGHBORHOOD 8C**



Project Design Consultant
Pardee Construction, Inc.
11111 1st St. N.W.
Seattle, WA 98149



4/20/99