

The Meadows Del Mar is located about a mile from the coast off Carnel County Road.

The Beauty of California.

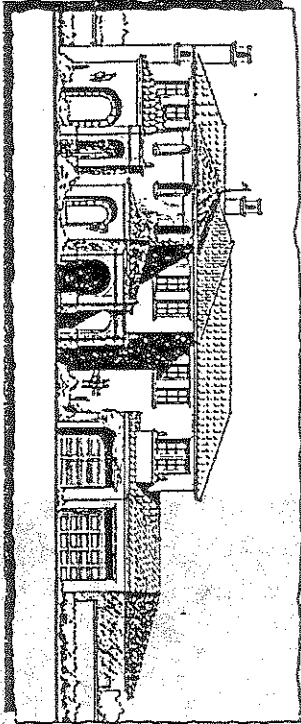
**THE MEADOWS
DEL MAR**



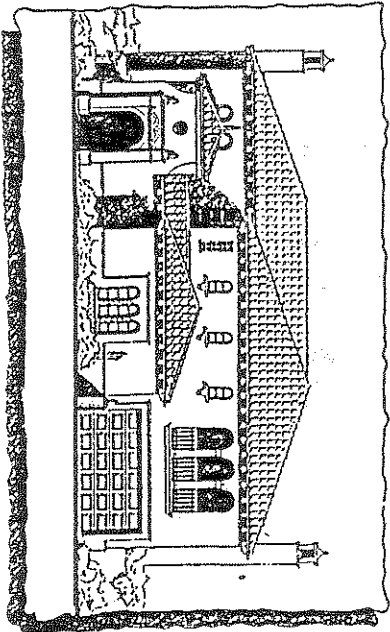
**THE MEADOWS
DEL MAR**

The Beauty of California.

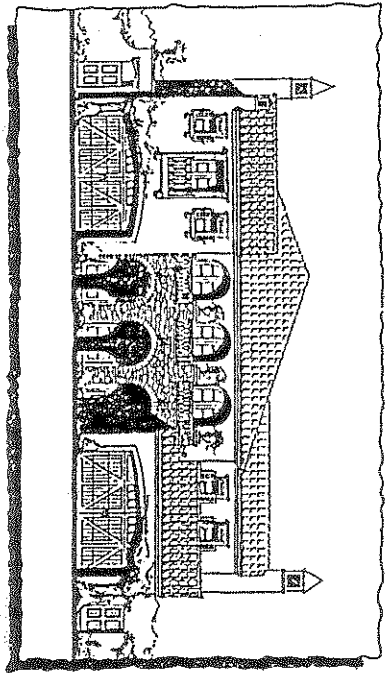




PLAN 1A



PLAN 2BR



PLAN 3AR

P R E L I M I N A R Y

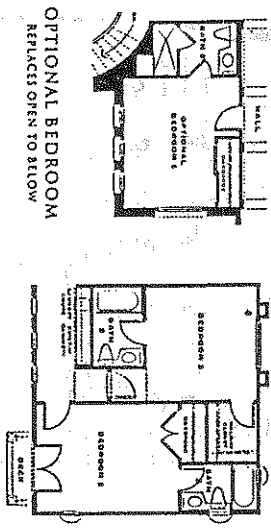
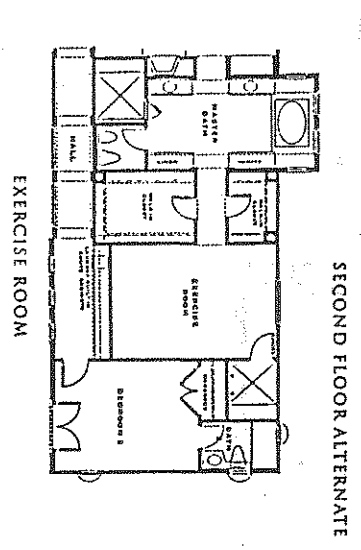
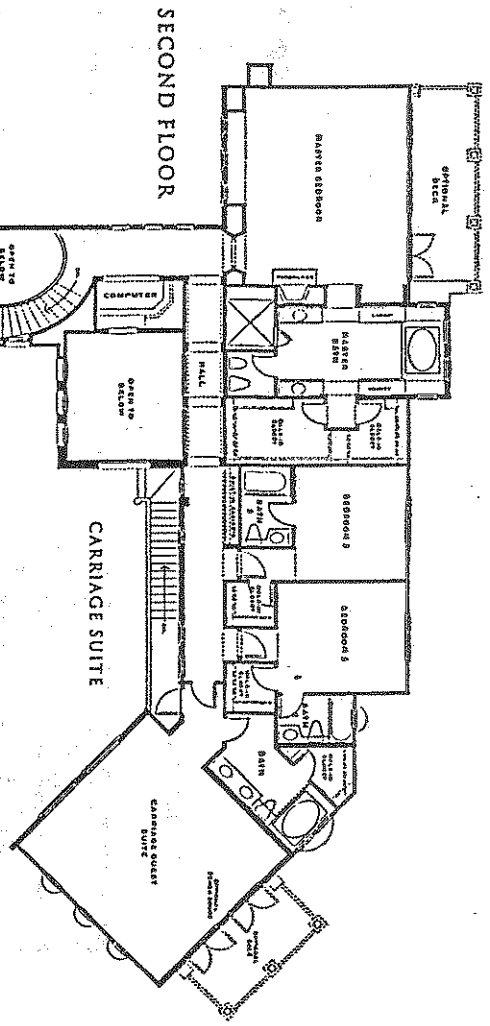
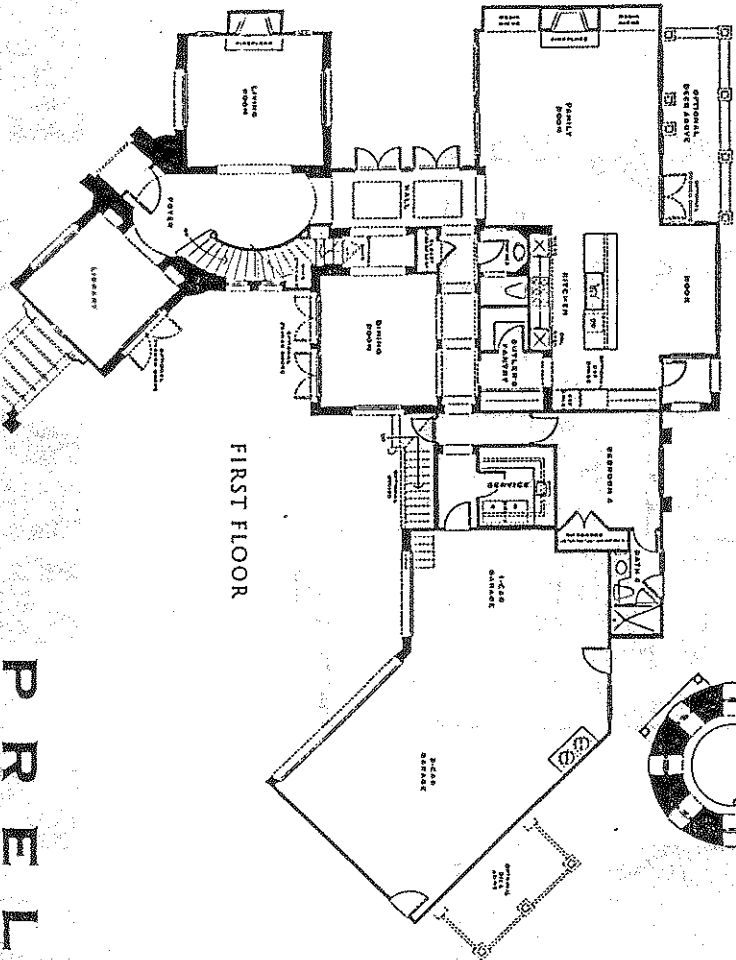

DAVIDSOI
 HOMES L.L.C.

THE MEADOWS
 DEL MAR

619-755-6306

BUYER'S COMMITMENT RESPECTS THE RIGHT TO
 CHOOSE OR REJECT ANYTHING TO BE DONE, PLANNED, SPECIFIED
 MATERIALS, FINISHED AND COLORS WITHOUT INTERFERENCE. NO
 AND A DECISION OF PLAN CHANGES AND ANY PROPORTION IN
 PRICES MAY CHANGE AT ANY TIME. PRODUCT TYPES, QUANTITIES,
 AVAILABILITY, SPECIAL FEATURES MAY BE INCLUDED OR
 EXCLUDED WITHOUT NOTICE TO CONSTRUCTION CHANGES IN
 ALL PARTS, PLANS, LANDSCAPING AND EXTERIOR DECORATION.
 AND OWNER'S CONCEPTIONS AND ARE NOT TO BE BOUND.

PRELIMINARY



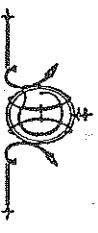
DAVIDSON CONSTRUCTION RESERVES THE RIGHT TO MAKE CHANGES OR MODIFICATIONS TO MODEL, PLANS, SPECIFICATIONS, MATERIALS, FINISHES AND COLORS WITHOUT NOTICE. MODEL AND SPECIFICATIONS OF FLOOR SLABS AND THE ASSOCIATED WORK SHALL NOT BE CHANGED AT ANY TIME, PRODUCT TYPE OR QUALITY. AVAILABILITY, OPTIONAL FEATURES AND OR INCLUDES, A SCHEDULE, COST SUBJECT TO CONSTRUCTION OUTSIDE PAIR ALL NEAR, PLAN, LABORING AND ELEVATION MEASURING AND ADVISORY CONSTRUCTION AND ARE NOT TO SCALE.

619-755-6306

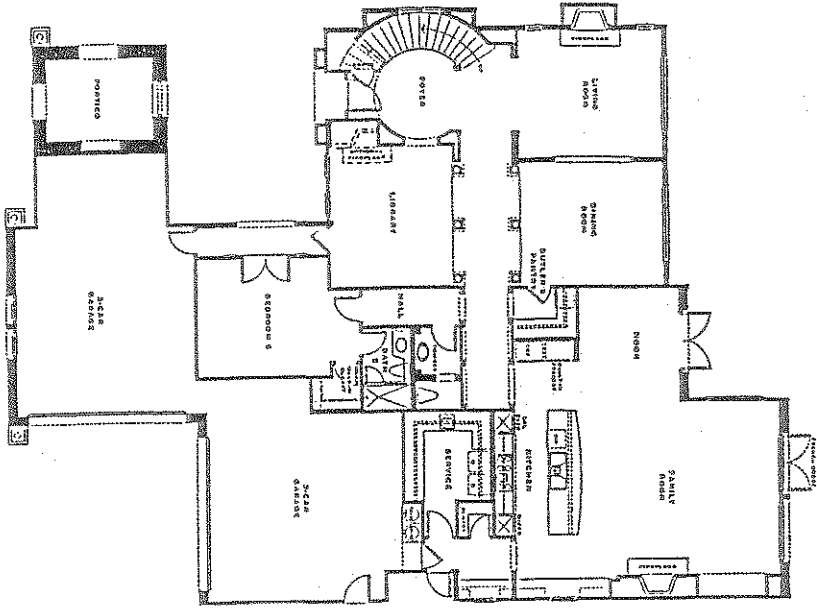
THE MEADOWS
DEL MAR



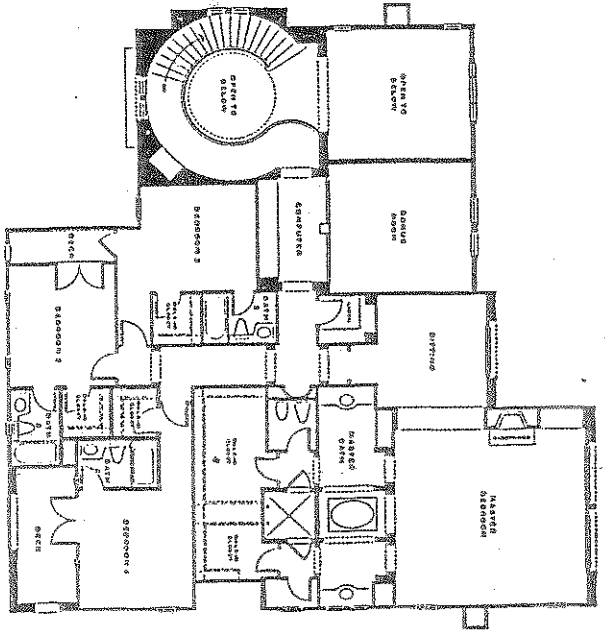
DAVIDSON
HOMES L.L.C.



RESIDENCE ONE
4,893 SQUARE FEET



FIRST FLOOR

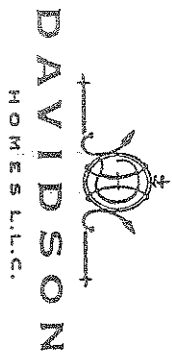


SECOND FLOOR

P R E P A R E D B Y

RESIDENCE TWO

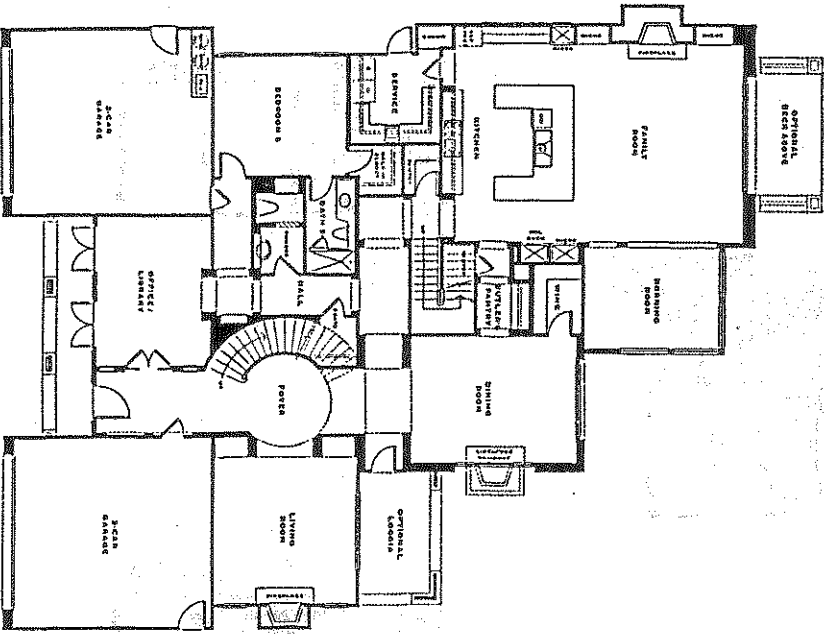
4,935 SQUARE FEET



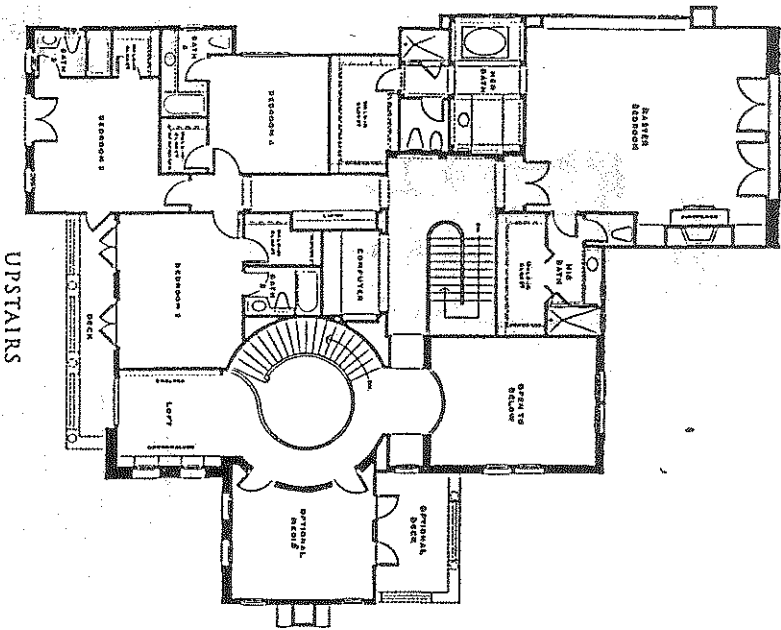
THE MEADOWS
DEL MAR

619-755-6306

OPTIONAL COMMUNITIES OR OTHERS ARE SUBJECT TO THE
 CHANGES OF REGISTRATION IN WAYS, PLANS, SPECIFICATIONS,
 MATERIALS, METHODS AND COLORS WITHOUT NOTICE. THESE
 ARE A DESCRIPTION OF ALPHABETICALLY LISTED AND CONSTRUCTION COST
 PRICES MAY VARY FROM TIME TO TIME. PRODUCT PRICES ARE SUBJECT TO
 AVAILABILITY. OPTIONAL PRICES ARE NOT INCLUDED IN
 ADDITIONAL COSTS SUBJECT TO CONSTRUCTION COSTS. SEE
 ALL MAPS, PLANS, SPECIFICATIONS AND EXHIBITS REGARDING
 AND ALL OTHERS' CONDITIONS AND SEE HOW TO GET IT.



FIRST FLOOR



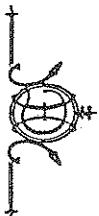
UPSTAIRS

P R E L I M I N A R Y

RESIDENCE THREE

5,955 SQUARE FEET

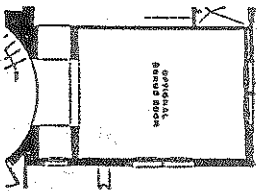
DAVIDSON
HOMES L.L.C.



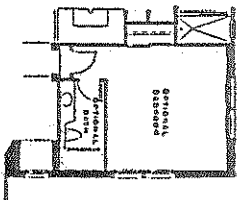
THE MEADOWS
DEL MAR

619-755-6306

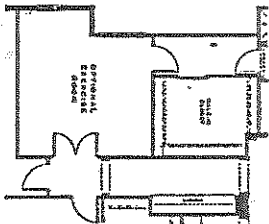
DAVIDSON COMPUTERS RESERVES THE RIGHT TO MAKE CHANGES OR MODIFICATIONS TO THIS PLAN, SPECIFICATIONS, MATERIALS, FEATURES AND COLORS WITHOUT NOTICE. MODEL AND A SECTION OF THIS PLAN AND THE PRODUCTION MODEL PRICE MAY CHANGE AT ANY TIME. PRODUCE YEAR IS SUBJECT TO AVAILABILITY. OPTIONAL FEATURES MAY BE INCLUDED IN ADDITIONAL COST SUBJECT TO CONSTRUCTION CAPACITY ONLY. ALL WORK, PLANS, LABORING AND EQUIPMENT INCLUDING ALL SERVICE CONNECTIONS ARE NOT TO SCALE.



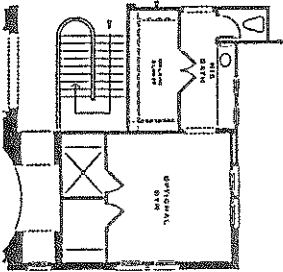
OPTIONAL
BONUS ROOM
REPLACES OPEN TO BELOW



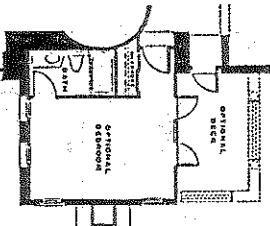
OPTIONAL
BEDROOM
REPLACES OPEN TO BELOW



OPTIONAL
EXERCISE ROOM
REPLACES BEDROOM FOUR




OPTIONAL
GYM
REPLACES OPEN TO BELOW



OPTIONAL
BEDROOM
REPLACES BONUS ROOM

RESIDENCE THREE ROOM OPTIONS


DAVIDSON
 HOMES L.L.C.

THE MEADOWS
 DEL MAR

619-755-6306

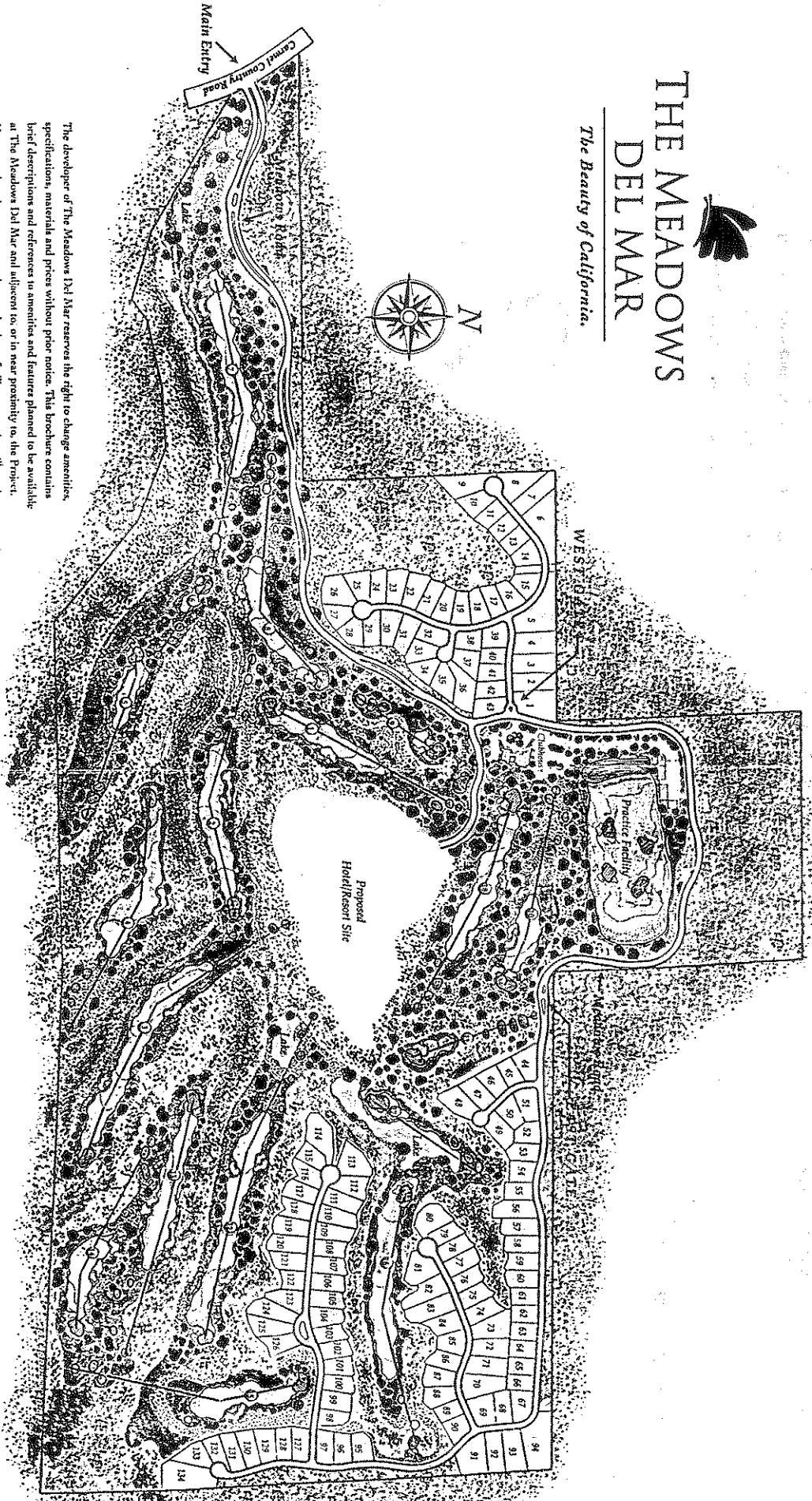
DRAWING COMMUNITIES RESERVES THE RIGHT TO MAKE
 CHANGES OR MODIFICATIONS TO MAKE, CLASH, SPECIFICATIONS,
 MATERIALS, FEATURES AND COLORS WITHOUT NOTICE. MODEL
 ARE A REPRESENTATION OF ALTERNATIVES AND NOT PRODUCTION. VARI-
 PRICES AND CHANGES IN PLAN TIME, PRODUCT TYPE IS SUBJECT TO
 AVAILABILITY. OPTIONAL FEATURES MAY BE IN CLASHES AS
 ADDITIONAL FEES SUBJECT TO CONSTRUCTION. GET OFF SITE
 ALL NEAR, PLANS, LANDSCAPING AND ELEVATION. APPROXIMATE
 ARE NOT TO BE CONSIDERED AND NOT TO BE USED.

P R E L I M I N A R Y

A mosaic of mythic color weaves its way through the light-filled valley.

Tucked among 380 acres of unspoiled countryside, The Meadows Del Mar found its palette and composition in the land's natural richness. Shimmering lakes, canyons and hills blend amenities like a world-class golf course designed by Tom Fazio and 134 of the Del Mar area's most exceptional estate sites. Miles of trails lead into surrounding public lands and wildlife preserves. Within this exclusive community, every element combines to create a place that recalls California's early beauty.

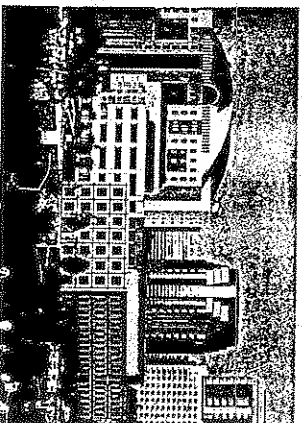
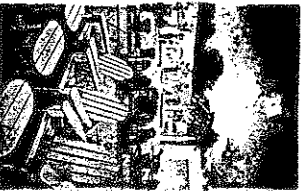
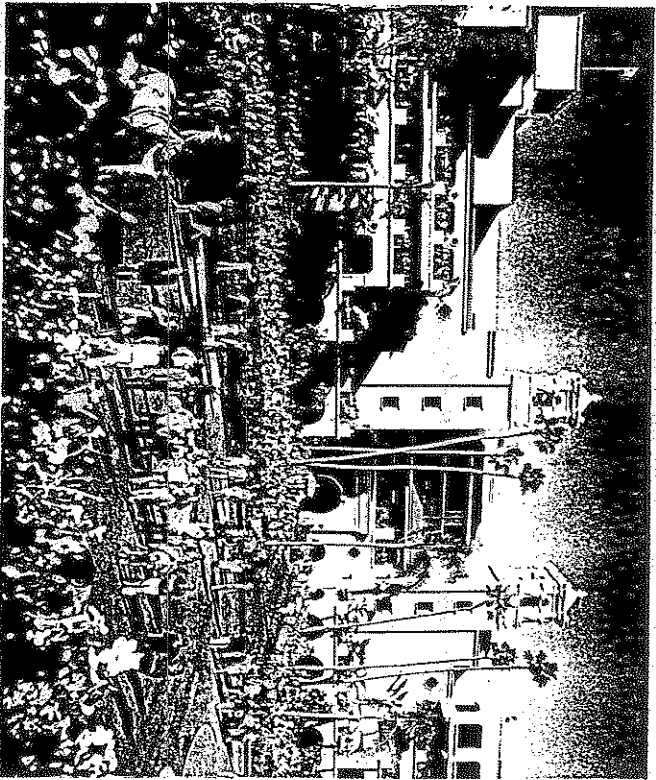
**THE MEADOWS
DEL MAR**
The Beauty of California.

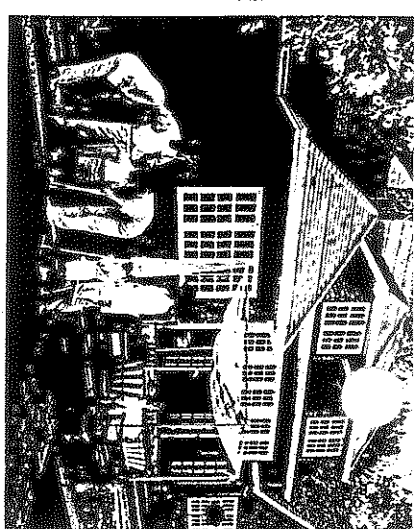


The developer of The Meadows Del Mar reserves the right to change amenities, specifications, materials and prices without prior notice. This brochure contains brief descriptions and references to amenities and features planned to be available at The Meadows Del Mar and adjacent to, or in near proximity to, the Project. However, there is no guarantee that any land use, facility or amenity will continue in its current use, or will be developed as shown. All maps, plans and renderings are artist's conceptions and are not necessarily drawn to scale. Please contact a

Rustic inns. Windswept beaches. Romantic lanes. Vivrant galleries. The joys of roaming Del Mar. You can see why poets and

novelists have sung Del Mar's praises. In a single day, you can play the ponies at historic Del Mar Racetrack, once hailed as "Bing's Baby." Lunch someplace casual or someplace trendy. Stroll, sightsee, shop and dine atop the hillside Del Mar Plaza — incidentally, the best place to absorb the panoramic setting. Or explore the jewels of the ever-near sea. Wherever you wind up in this intimate village, you meet people who seem to have discovered the secrets of contentment. Perhaps it's the extraordinary quality of life. You're still minutes from Golden Triangle and Sorrento Valley businesses. La Jolla's just down the coast. And a short 20-mile drive takes you to the heart of San Diego. Even so, the highlight of these excursions is always the road that leads home. To a world of mythic beauty: The Meadows Del Mar.





The Meadows Del Mar. Rather quiet, rather grand. The kind of canvas only California could have created.

Crystalline lakes. Radiant valleys. Buoyant fields. Secluded in Del Mar's coveted Shaw Valley, yet minutes from civilization. And amid this classic golf community, just enough man-made enhancements to let you know you've arrived. Paternal homes from a sophisticated mix of styles — 1920's Spanish, Mediterranean, Italian, French — sprinkled across undulating hills. Enclaves of custom homesites perched over canyons and fairways, so you can gasp at the views. Outside your window, seek out exquisite gardens. Hike, bike and amble far and wide on peaceful pathways. Venture beyond The Meadows Del Mar and observe the immense world of an unspoiled wilderness — Los Peñasquitos Preserve is among your new neighbors. This is the opportunity to not simply look at nature, but to live with it.

THE
MEADOWS
DEL MAR



Main Entrance and Carhouse.

