

Triple Crown

at Seabreeze Farms

Casual Elegance

in Coastal-Close Carmel Valley

TRIPLE  CROWN

at Scudicco Farms



BARRATT

Building Fine Homes Since 1938



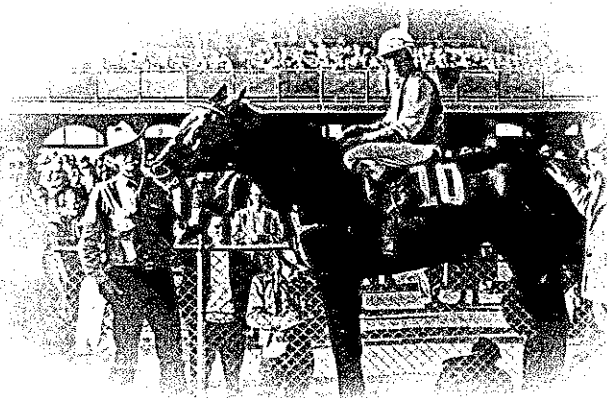
WELCOME

Put yourself *in the* winner's circle...
...at an intriguing new community of sensational homes.

Warm, sunny days refreshed by a gentle ocean breeze. Explosions of color as spectacular Pacific sunsets herald the approaching evening. Star-filled skies and quiet nights in a peaceful setting. 🌿 Such is every day at Triple Crown at Seabreeze Farms, where stylish and luxurious homes pay tribute to the relaxed and gracious equestrian lifestyle that developed on these gentle hillsides. 🌿 The Triple Crown setting is unique, and Barratt has outdone itself in creating elegant and distinctive homes that perfectly complement the style and history of the enviable location. 🌿 These incomparable homes were carefully planned to meet all the entertaining needs of your busy and eclectic lifestyle, from the most formal of dinner parties to warm and casual conversation around the kitchen island. And, when the party is over, you'll find pampering comforts at every turn, from oversized soaking tubs in the master bath to upstairs laundry rooms, convenient to all the bedrooms. 🌿 Unexpected pleasures abound — a warm and comfortable inglenook in Residence One...the spectacular formal dining room in Residence Two with soaring cathedral ceiling...a library loft overlooking the living room in Residence Three. 🌿 Triple Crown at Seabreeze Farms in Carmel Valley is truly a thoroughbred location. North coastal beaches are minutes away. Del Mar and La Jolla are conveniently close for shopping, dining and entertainment. World-famous golf courses are all around. All the warmth and charm that make California coastal living so appealing are yours to enjoy. 🌿 And the Barratt craftsmen have created homes that truly complement this incomparable location. 🌿 Triple Crown at Seabreeze Farms. It's a sure thing.

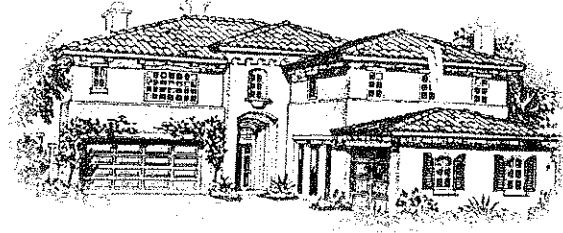
TRIPLE  CROWN

at Seabreeze Farms

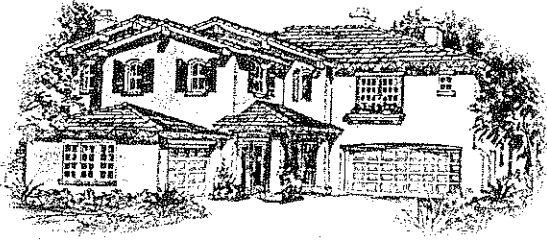


RESIDENCE ONE

ELEVATION A-FRENCH COUNTRY



ELEVATION B-AMERICAN CRAFTSMAN



ELEVATION C-ITALIAN TUSCAN



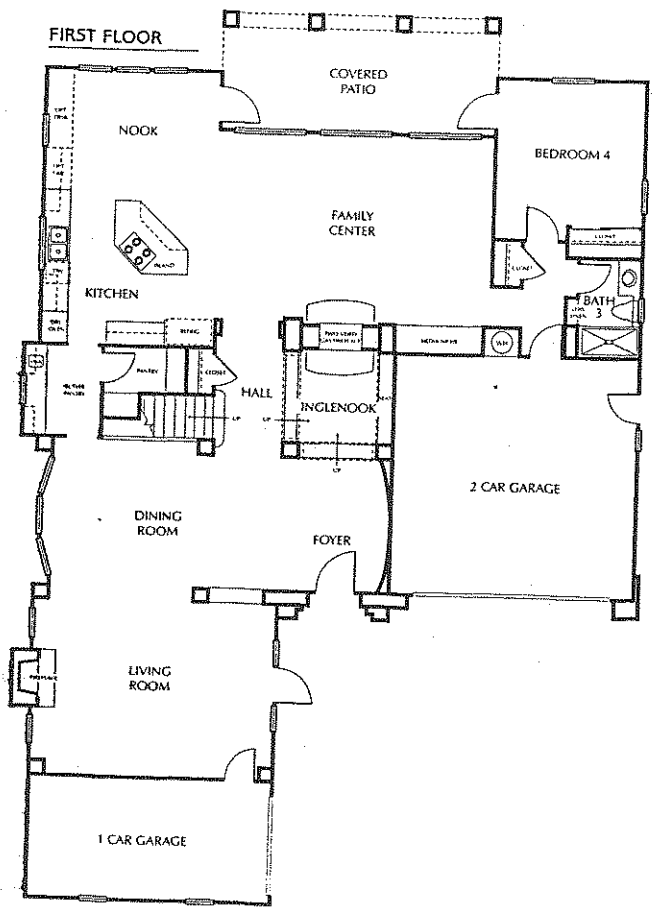
The Derby

3,648 Square Feet
 Four Bedrooms
 Retreat
 Three Baths
 Three-Car Garage
 Two Stories

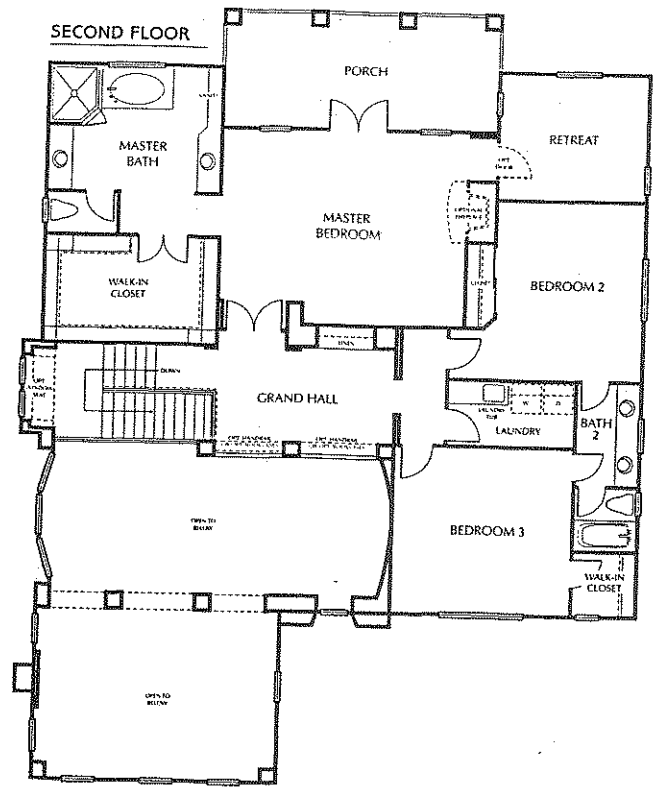


The Derby is a warm and friendly family home. As you enter the foyer, the adjacent living and formal dining rooms both feature soaring cathedral ceilings with dramatic clerestory windows. Enjoy an after-dinner cordial around the fireplace in the cozy inglenook. The spacious island kitchen and family center promise good times to come. A convenient butler's pantry helps make dinner parties special. Upstairs, the master suite features a quiet retreat and large private porch. The Derby will capture your family's heart.

FIRST FLOOR



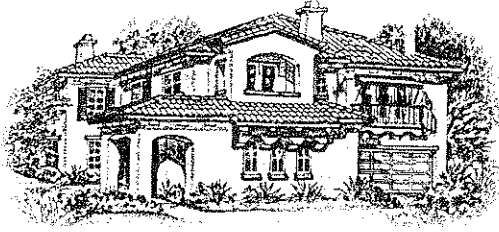
SECOND FLOOR





RESIDENCE TWO

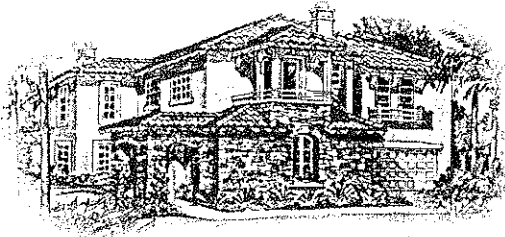
ELEVATION A-FRENCH COUNTRY



ELEVATION B-AMERICAN CRAFTSMAN



ELEVATION C-ITALIAN TUSCAN



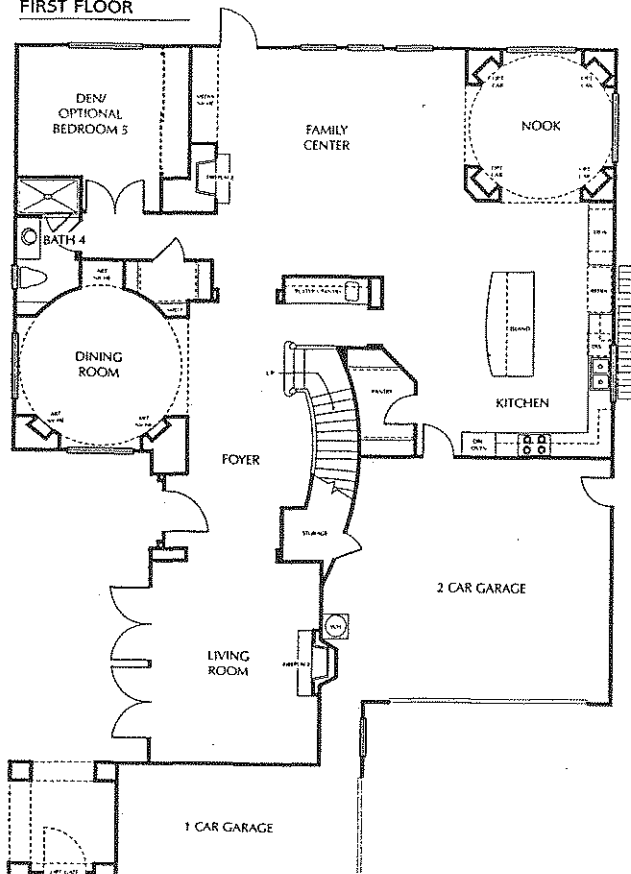
The Preakness

4,196 Square Feet
Four Bedrooms
Den
Four Baths
Three-Car Garage
Two Stories

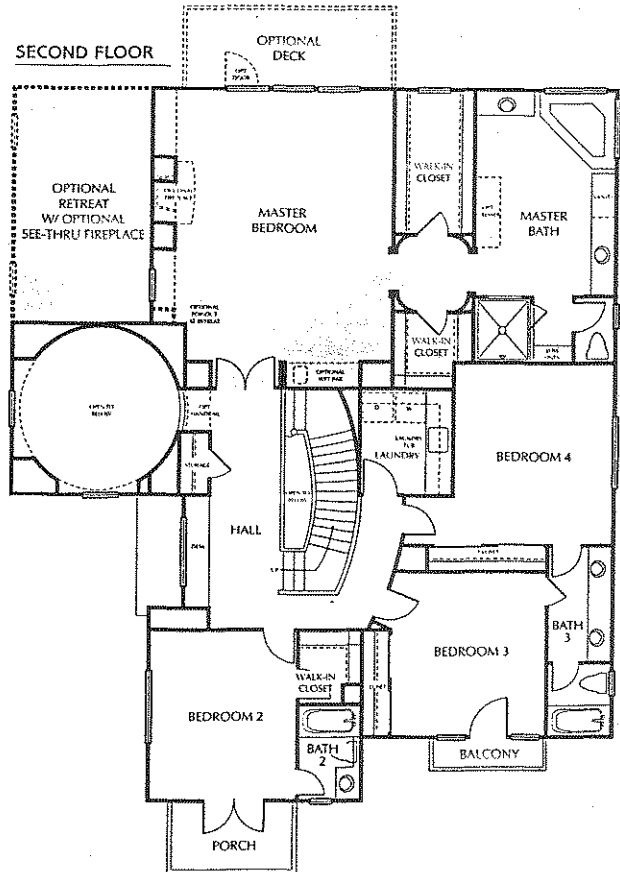


The Preakness loves to party, and handles formal entertaining and casual conversation with equal grace. A charming courtyard entry leads to a foyer with spectacular curving staircase. The living room opens onto the courtyard to take advantage of pleasant summer evenings. The centerpiece round dining room, with soaring cathedral ceiling, adds elegance and drama to any dinner party. More casual events will be comfortably centered in the family room, island kitchen and circular nook. Upstairs is the private master suite, three airy bedrooms and a convenient laundry room.

FIRST FLOOR

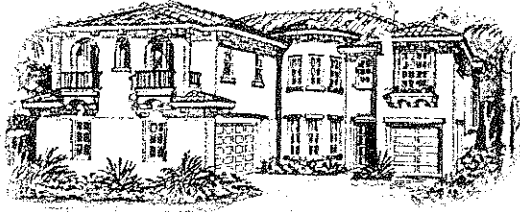


SECOND FLOOR



RESIDENCE THREE

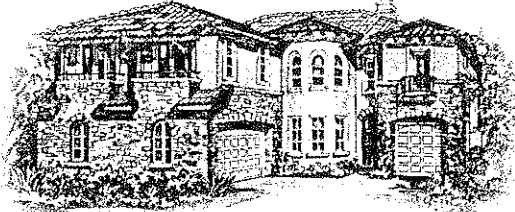
ELEVATION A-FRENCH COUNTRY



ELEVATION B-AMERICAN CRAFTSMAN



ELEVATION C-ITALIAN TUSCAN



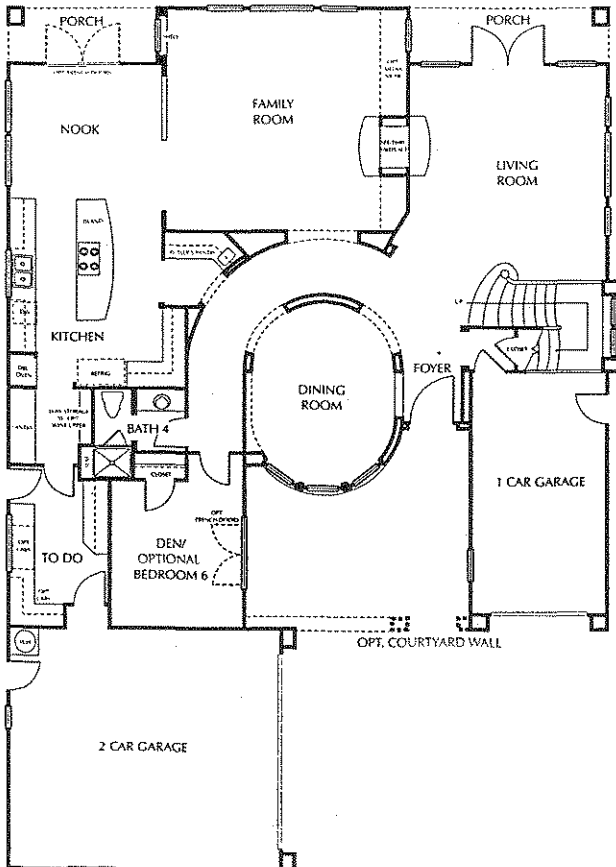
The Belmont

4,307 Square Feet
 Five Bedrooms
 Den
 To-Do Room
 Four Baths
 Three-Car Garage
 Two Stories

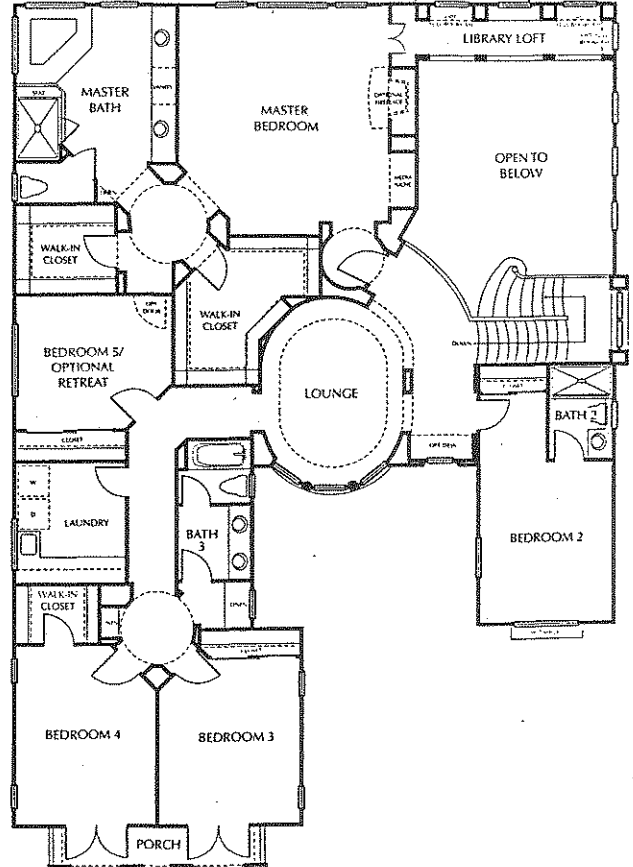


The Belmont is a sparkling statement of style and elegance, as well as an exceptionally warm and comfortable home. An entry courtyard brings you to the foyer. Immediately adjacent is the formal dining room, a majestic setting for memorable events. Ahead is the living room with soaring cathedral ceiling and overlooking library loft off the master suite. The spacious family room is warmed by a fireplace, and the adjoining island kitchen and nook are ideally arranged. Connecting the kitchen and garage is the "To-do" room, ideally for any project you've got to do. The second floor revolves around a charming lounge, with private and pampering master suite, four bedrooms and convenient laundry center. The Belmont is the kind of place where dreams come true.

FIRST FLOOR

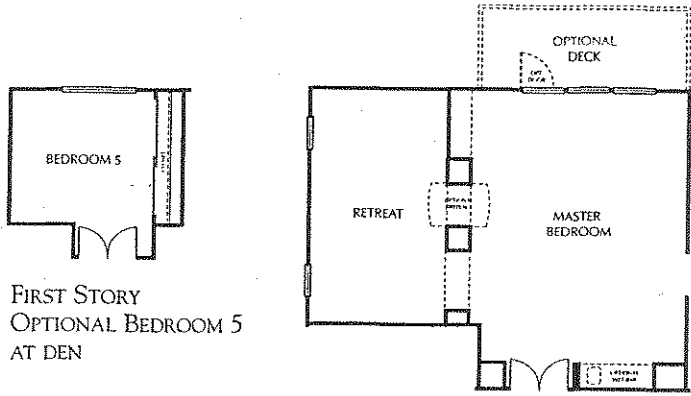


SECOND FLOOR





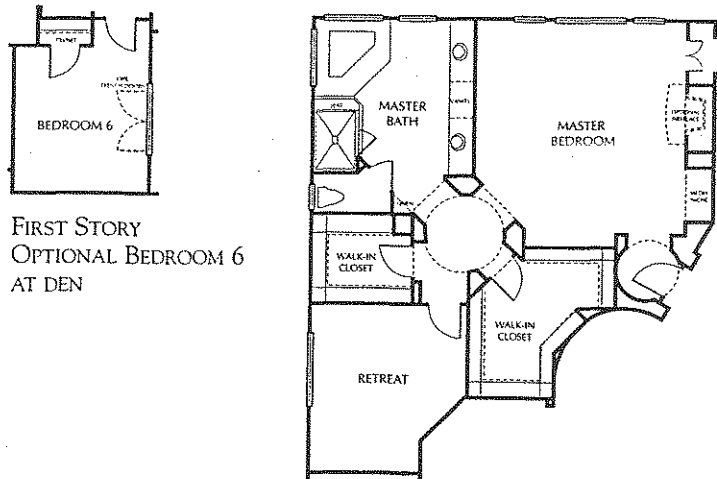
PLAN TWO



FIRST STORY
OPTIONAL BEDROOM 5
AT DEN

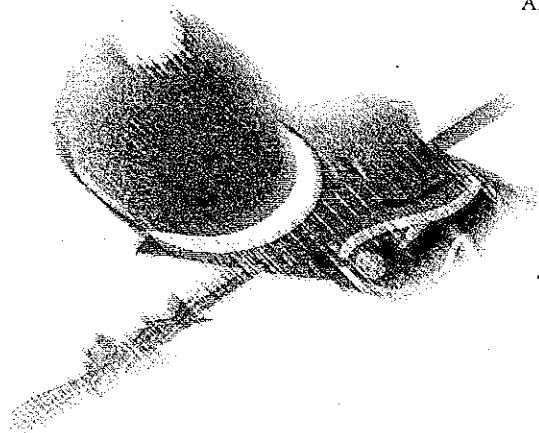
SECOND STORY OPTIONAL RETREAT
AT MASTER BEDROOM

PLAN THREE

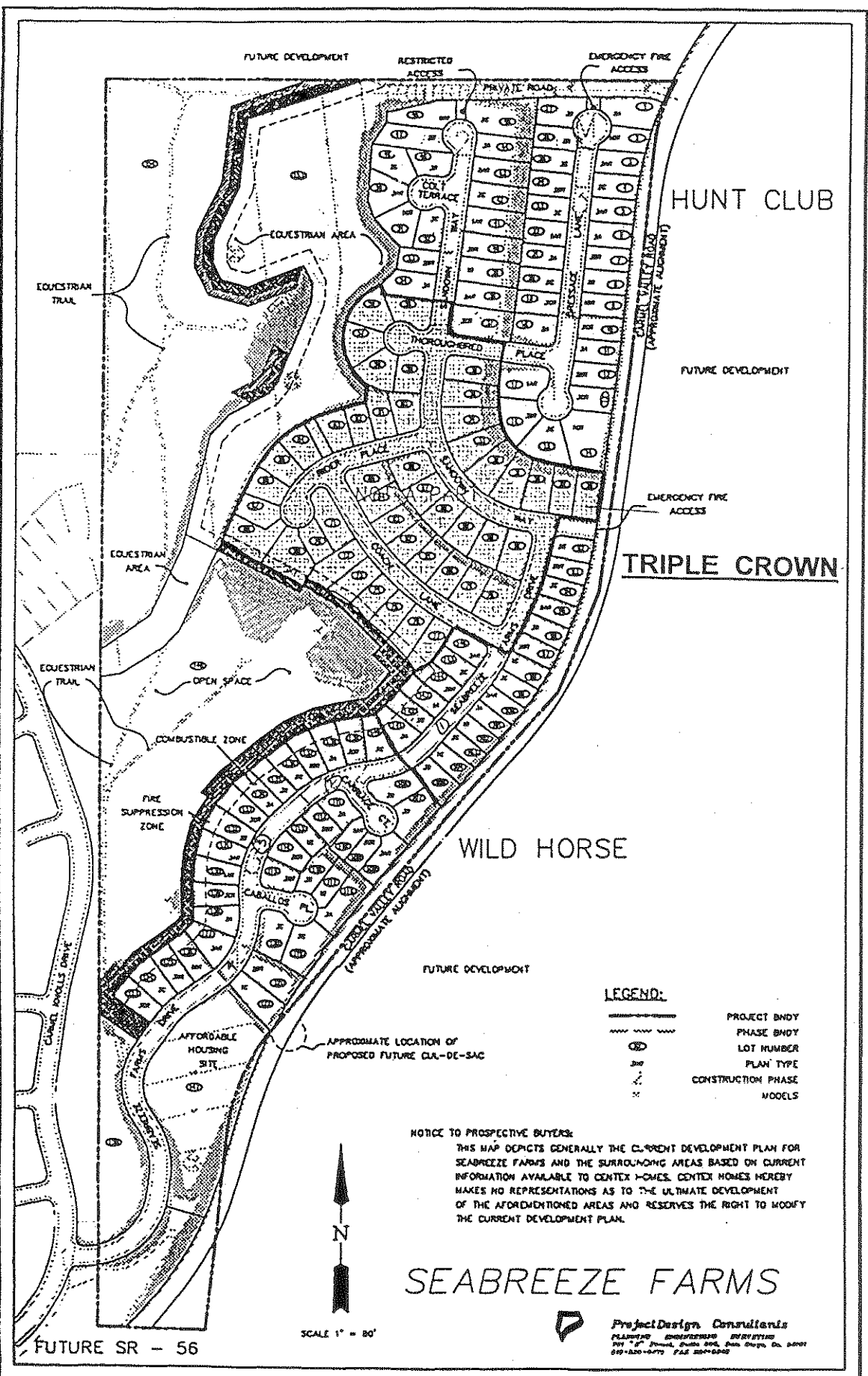


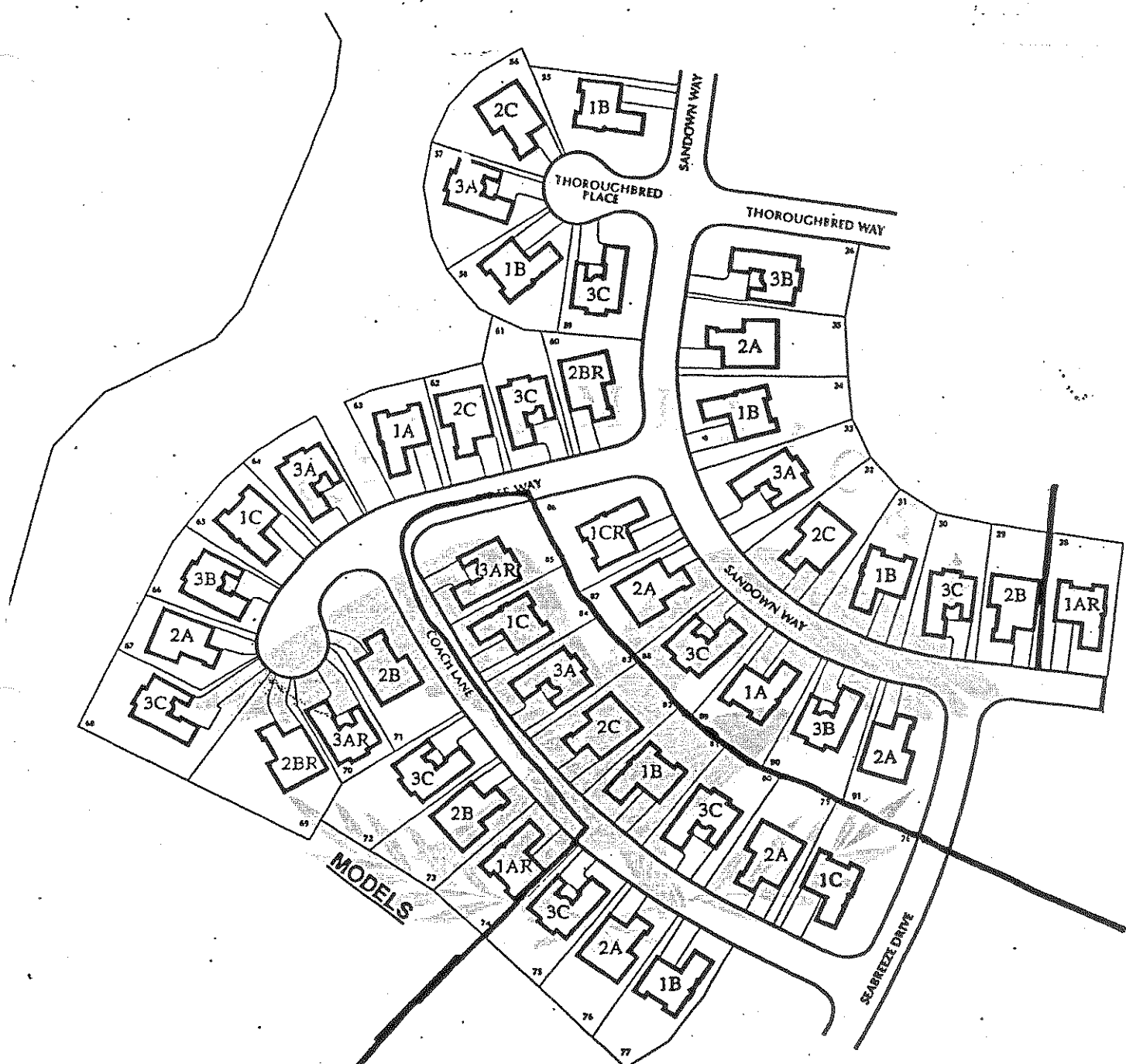
FIRST STORY
OPTIONAL BEDROOM 6
AT DEN

SECOND STORY OPTIONAL RETREAT
AT BEDROOM 5



TRIPLE CROWN
at Seabreeze Farms





TRIPLE CROWN AT SEABREEZE FARMS

SITE PLAN

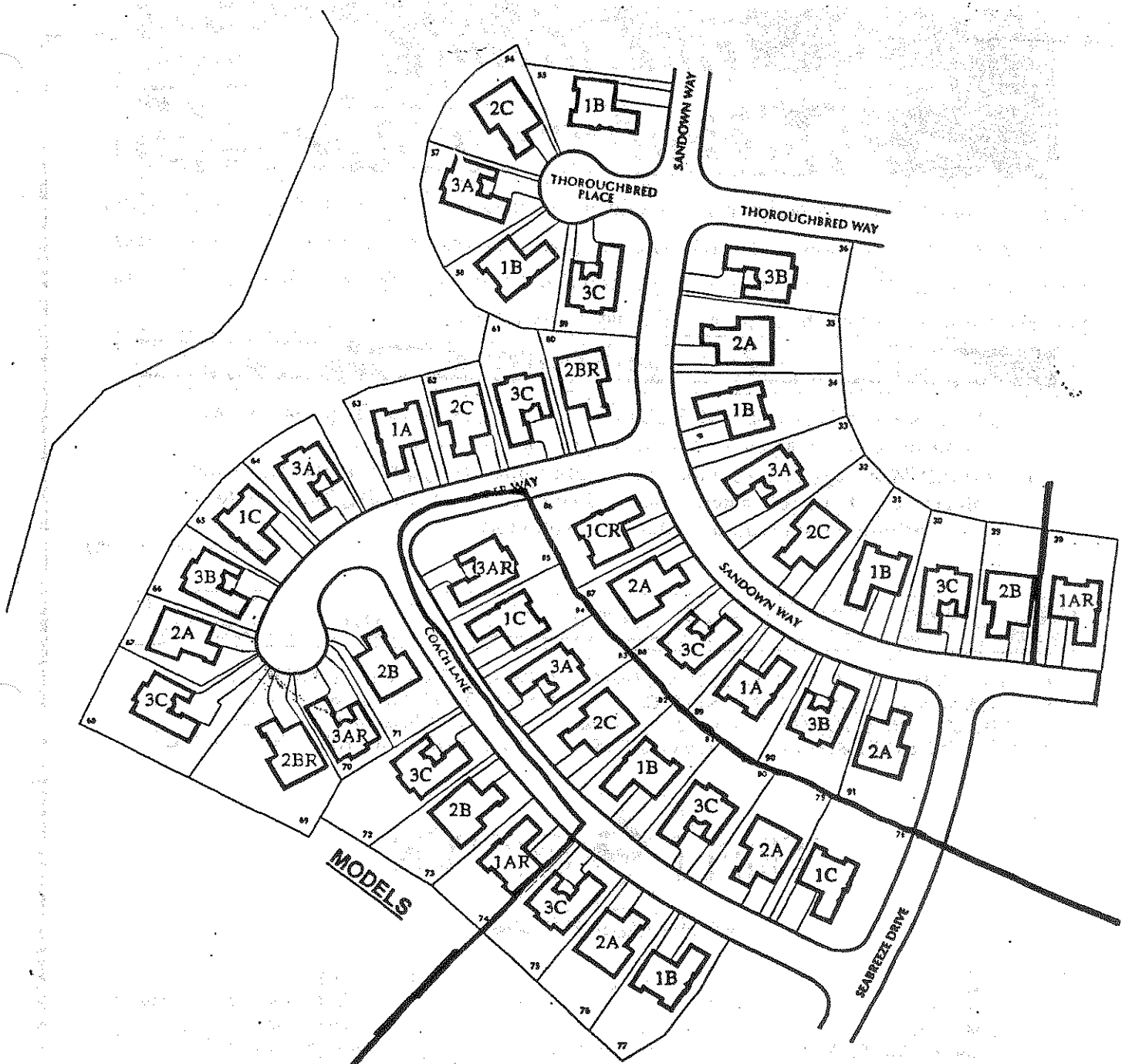




TRIPLE CROWN AT SEABREEZE FARMS

SITE PLAN





TRIPLE CROWN AT SEABREEZE FARMS

SITE PLAN

